

# SEC, Inc.

## SITE ENGINEERING CONSULTANTS

Civil Engineering · Land Surveying · Land Planning · Landscape Architecture

### *Municipal*

The Municipal market segment has always been a mainstay for SEC, Inc. Our experience in this area, combined with our diverse background in the basics of civil engineering design, creates a strong foundation which allows us to deliver your projects professionally and in a timely manner.

We take the project from concept through construction by providing the various elements necessary in the process. SEC, Inc. has in-house surveying services and provides boundary and topographic surveys, ALTA-ACSM surveys, control surveys, and construction staking services.

SEC also provides conceptual land use master planning and rezoning services. Our typical residential design includes site layout, water and sewer main, grading, drainage and erosion control designs. Our designs are supplemented by construction details and specifications.

In 1997 SEC began designing decentralized sewage treatment plants for some of its residential developments where public sewer was not available. The process utilizes a recirculating sand filter, ultraviolet disinfection, and drip irrigation disposal. Since that time, we have designed over 4,200 lots on what has become known as the STEP system, for Septic Tank Effluent Pump. In 2007 we received a Design in Excellence Award for our design from the American Council of Engineering Companies. This system allows development to occur in densities that would otherwise not be possible without the availability of public sewer.

*Our typical residential projects include:*

- Roadway Design
- Downtown Revitalization
- Water & Sewer Utilities
- Decentralized Sewage Treatment Plants
- Sewage Treatment Effluent Plant (STEP)

### *Representative Residential Projects Include:*

#### Roadway Design: Murfreesboro, TN

- Middle Tennessee Boulevard (2 sections),
- Florence Road,
- DeJarnette Lane,
- Church Street Corridor Improvement Plan,
- Battleground Drive Extension,
- North Spring Street (2 sections),
- Rutherford Boulevard,
- Fortress Blvd./Manson Pk. Realignment

#### Downtown Revitalization

- Murfreesboro Downtown Revitalization Plan, Murfreesboro, TN
- Main Street Master Plan, Murfreesboro, TN
- Main Street Master Plan, Decatur, TN

#### Water & Sewer Utilities:

- Middle Tennessee Boulevard Water & Sewer, Murfreesboro, TN
- Battleground Drive Extension Water & Sewer, Murfreesboro, TN
- Del Rio Pike 24" Waterline Extension, City Of Franklin, TN
- Laurel Wood Subdivision Pump Station Design, Murfreesboro, TN
- Woodall Ridge Subdivision Pump Station Design, Lebanon, TN

#### Decentralized Sewage Treatment Plants:

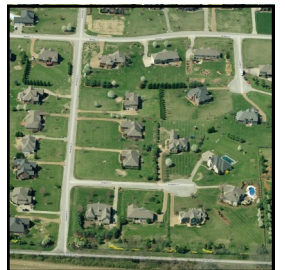
#### Sewage Treatment Effluent Plant



Winslow Park Zero Lot-line at Berkshire, Murfreesboro, TN



Triple Crown Mt. Juliet, TN



Whitehall Farms Franklin, TN



Riverbend Park Town Homes Murfreesboro, TN



Northridge Apartments Jackson, TN



The Preserve at Puckett Station Murfreesboro, TN